



A DOW and TORAY Joint Venture

Dow Toray Co., Ltd.

Fast facts

Head office

Tennozu Central Tower
2-2-24 Higashi-Shinagawa,
Shinagawa-ku, Tokyo 140-8617 Japan
03-5460-4380 (main reception)
www.dow.com/ja-jp

Representative directors

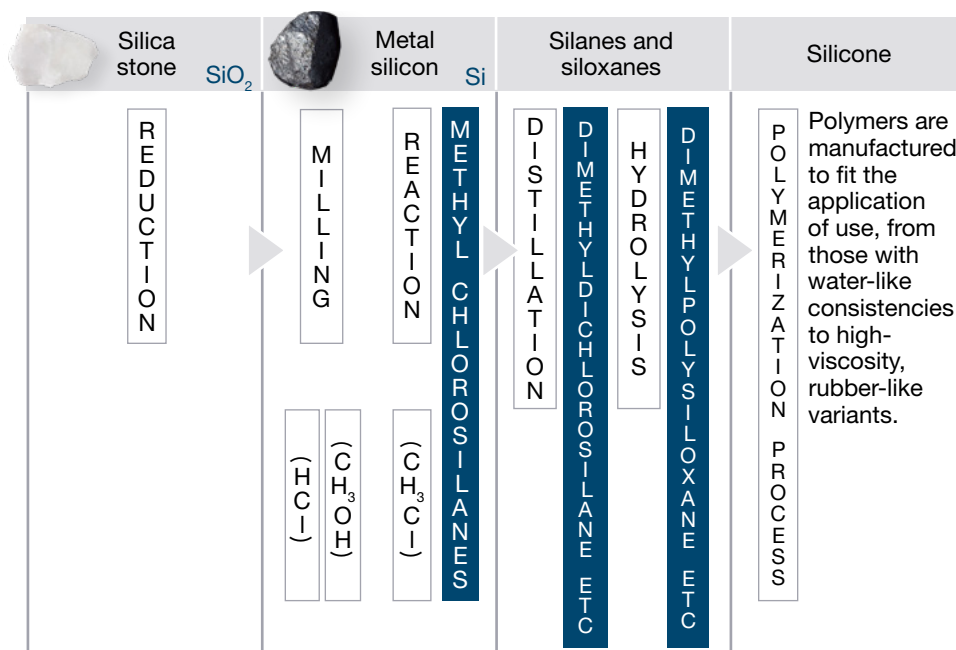
Masanori Saito, Chairman & CEO
Yasuhiro Takagi, President & COO

About Dow Toray Co., Ltd.

Dow Toray Co., Ltd. (Dow Toray), a joint venture between Dow and Toray, combines the strengths of R&D, manufacturing capability, and market knowledge built through more than 50 years of engaging with customers in Japan, to provide innovation and proven solutions in mobility, consumer and electronics, building and infrastructure, home and personal care, and chemical processing industries. Dow Toray delivers a proven portfolio of primarily silicone, and organic technologies to serve the diverse needs of customers and continue to improve the lives of consumers towards a sustainable future. Visit www.dow.com/dow-toray to learn more.

About silicone

Silicon is the second most abundant chemical element in the Earth's crust, after oxygen. The reduction of natural silica stone produces metallic silicon. Reacting silicon with methyl chloride at high temperature produces silanes, which can be broken down by hydrolysis to obtain siloxanes, which can then be processed in various ways to produce the material silicone. Silicone has many functional properties, including resistance to heat and cold, electrical insulation, flame retardance and high optical transparency. The material also be processed into different types with various physical properties, as a liquid, elastomer or solid, and is therefore utilized in a wide range of industries.



Corporate outline (as of December 2025)

Established	June 22, 2018
Shareholders	Dow Chemical Japan Limited 65% Toray Industries, Inc. 35%
Capital	400.5 million JPY
Employees	Approx. 670 including group company
Accounting period	December 31
Development center	Chiba
Factories	Chiba, Fukui, Komatsu
Branch office	Nagoya

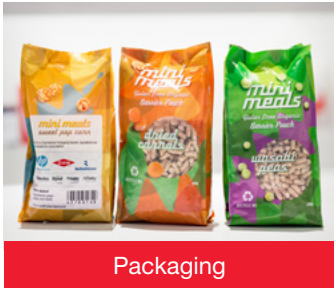
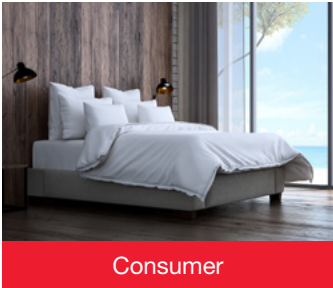
Directors (as of October 2025)

Chairman & CEO	Masanori Saito
President & COO	Yasuhiro Takagi
Director	Masahiro Sato
Director	Yasushi Nishiyama
Director	Puay Koon Chia
Director	Waranya Charoensuk
Auditor	Jun Yamazaki
Auditor	Takashi Imaizumi
Auditor	Lim Chee Yong

Main brands



Important silicone solutions across Dow’s four primary end markets



About Dow

Dow (NYSE: DOW) is one of the world’s leading materials science companies, serving customers in high-growth markets such as packaging, infrastructure, mobility and consumer applications. Our global breadth, asset integration and scale, focused innovation, leading business positions and commitment to sustainability enable us to achieve profitable growth and help deliver a sustainable future. We operate manufacturing sites in 30 countries and employ approximately 36,000 people. Dow delivered sales of approximately \$43 billion in 2024. References to Dow or the Company mean Dow Inc. and its subsidiaries. Learn more about us and our ambition to be the most innovative, customer-centric, inclusive and sustainable materials science company in the world by visiting www.dow.com

Images: GettyImages-522553248_Slate, dow_40264421100, dow_40384206396, dow_59512405933, dow_67413065708, dow_74319981212, dow_76343142419

NOTICE: No freedom from infringement of any patent owned by Dow or others is to be inferred. Because use conditions and applicable laws may differ from one location to another and may change with time, Customer is responsible for determining whether products and the information in this document are appropriate for Customer’s use and for ensuring that Customer’s workplace and disposal practices are in compliance with applicable laws and other government enactments. The product shown in this literature may not be available for sale and/or available in all geographies where Dow is represented. The claims made may not have been approved for use in all countries. Dow assumes no obligation or liability for the information in this document. References to “Dow” or the “Company” mean the Dow legal entity selling the products to Customer unless otherwise expressly noted. NO WARRANTIES ARE GIVEN; ALL IMPLIED WARRANTIES OF MERCHANTABILITY OR FITNESS FOR A PARTICULAR PURPOSE ARE EXPRESSLY EXCLUDED.

®™ Trademark of The Dow Chemical Company (“Dow”) or an affiliated company of Dow.

© 2025 The Dow Chemical Company. All rights reserved.

2000024826-602250

Form No. 01-4529-01-1225 S2D